

# Raceway Solutions™

## Underfloor Duct - Quick Reference Guide

### Conventional Underfloor Duct



#### Catalog Number System

**203**

#### # of Cells

- 1 = Single Cell
- 2 = Two Cell
- 3 = Three Cell
- 4 = Four Cell

**- 2 -**

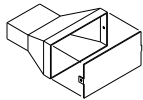
#### Insert Height

- B = Blank
- 1 = 1" Height
- 15 = 1 1/2" Height
- 2 = 2" Height
- 3 = 3" Height

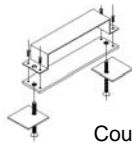
**12**

#### Insert Spacing

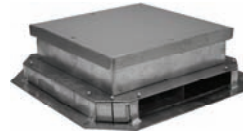
- 12 & 24 Standard
- 6, 18, & 36 (optional)



Conduit Adapter



Coupler/Support

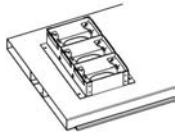


202-JB-3

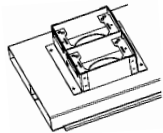
#### Features & Benefits

- Multi-compartment Duct, reducing installation and material cost
- Five Designs Available
- Four Insert Heights
- 10' Standard Lengths
- Combination Duct Coupler Supports
- Meets UL 884 specifications
- Multiple Junction Box Options
- Complete line of fittings and accessories allowing design flexibility
- Custom sizes available

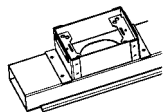
### Flush Activation Underfloor Duct



**203F Series**  
Three Compartment



**202F Series**  
Two Compartment



**201F Series**  
Single Compartment

#### Catalog Number System

**20**

#### # of Cells

- 1 = Single Cell
- 1W = Single Cell Wide
- 2 = Two Cell
- 3 = Three Cell

**- 3 -**

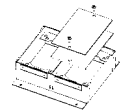
#### Insert Height

- B = Blank
- 15 = 1 1/2" Height
- 2 = 2" Height
- 3 = 3" Height

**12**

#### Insert Spacing

- 12 & 24 Standard
- 6, 18, & 36 (optional)



**Afterset Insert**  
Provides means to add activation after duct installation



#### Features & Benefits

- Aesthetic Wire Management Solution for Power and Communication
- Unique one-piece duct reduces installation labor
- Multi-gang inserts offer application flexibility
- Individual gangs can be activated as needed - keeping cost down
- Flush mounted activation trims are available for both carpet and tile applications.
- Additional benefits listed under Conventional Underfloor Duct

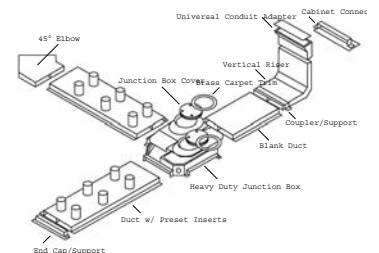
#### Flush Mounted Activation Trims

- Brass
- Aluminum
- Nonmetallic - Beige
- Nonmetallic - Black
- Nonmetallic - Gray

### Casino Duct

#### Features & Benefits

- Heavy Duty Cast Aluminum Junction Box meets high load requirements of a casino environment
- One piece duct configuration simplifies assembly and leveling for reduced installation cost
- Attractive brass carpet trims available for junction box covers
- System includes a complete line of accessories and fittings for design flexibility
- Meets UL 884 requirements



Typical Casino Duct Layout

Please refer to Raceway Solutions Underfloor Catalog for additional information.

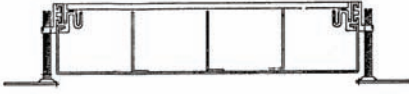
-Over-



# Raceway Solutions™

## Underfloor Duct - Quick Reference Guide

### Trench Duct



#### Features & Benefits

- High Capacity Duct
- 14 Gauge Material
- Removable Cover Plates Available in 3/16" or 1/4" Thickness
- 6' Length Standard
- Total adjustability prior to concrete pour
- Aluminum Trim Frame
- UL Listed No. 884

#### Catalog Number System

**O****K****A** / **B** **12** - **3****C** - **AL** **1/4**

**Trench Product**  
 OKA—Trench  
 OKB—Pull Box  
 OKC—Exit Cover  
 OKD—End Cap  
 OKL—Horizontal L  
 OKR—Vertical Riser  
 OKT—"T" Junction Box  
 OKX—"X" Junction Box

**Depth**  
 1/2" Increments  
 A = 2"  
 B = 2 1/2"  
 C = 3"  
 D = 3 1/2"  
 E = 4"  
 ...  
 J = 6"  
 ...  
 N = 8"

**Width**  
 9, 12, 18, & 24  
 Standard  
 (other widths available)

**Number of Compartments**  
 1C = 1 Compartment  
 2C = 2 Compartment  
 3C = 3 Compartment  
 4C = 4 Compartment

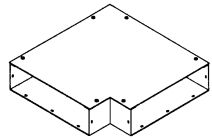
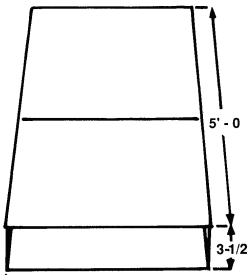
1/4" Thick Cover Plate (optional)  
 Aluminum (optional)

**\*Other Depths Available**

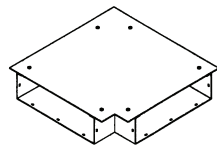
OKA/B12-3C w/ Vertical Riser



### Hospital Wall Duct



OWH/D12S (Surface)



OWH/D12F (Flush)

#### Catalog Number System

**O****W****A** / **D** **12** **S** - **AL**

**Wall Duct Product**  
 OWA—Wall Duct  
 OWB—Adapter  
 OWC—Coupling  
 OWD—Reducer Coupling  
 OWE—End Closure  
 OWF—Cabinet Connector  
 OWH—Horizontal Elbow  
 OWI—Internal Elbow  
 OWL—External Elbow  
 OWP—Partition  
 OWR—Vertical Riser  
 OWT—"T" Unit  
 OWV—Trench to Wall Duct Adapter  
 OWX—"X" Unit

**Depth**  
 1/2" Increments  
 A = 2"  
 B = 2 1/2"  
 C = 3"  
 D = 3 1/2" Standard  
 E = 4"  
 ...  
 J = 6"  
 ...  
 N = 8"

**Width**  
 6, 10, 12, & 18  
 Standard  
 (other widths available)

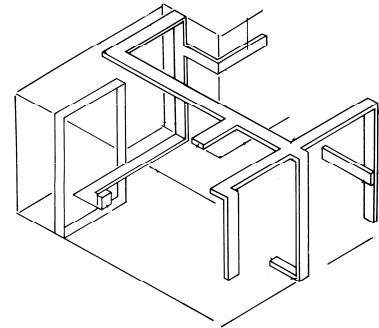
**Cover Style**  
 "S" — Surface  
 "F" — Flush

Aluminum (optional)

**\*Other Depths Available**

#### Features & Benefits

- Constructed from 14 gauge galvanized steel or aluminum material
- Complete line of fittings
- Removable cover plates for easy wire access
- UL approved File No. E116245



Typical Installation

Please refer to Raceway Solutions Underfloor Catalog for additional information.

-Over-

